

APPROVED UNDER SECTION 51 OF THE PLANNING ACT BY THE CITY OF OTTAWA THIS 21 DAY OF AUGUST, 2008.

PLAN 4M-1322

JOHN L. MOSER, DIRECTOR, PLANNING BRANCH, PLANNING, TRANSPORT AND THE ENVIRONMENT, CITY OF OTTAWA.

OWNERSHIP SCHEDULE table with columns: LOT / BLOCK / STREET, ALL OF P.I.N., and LAND REGISTRAR. Includes entries for blocks 148-156 and 159-167.

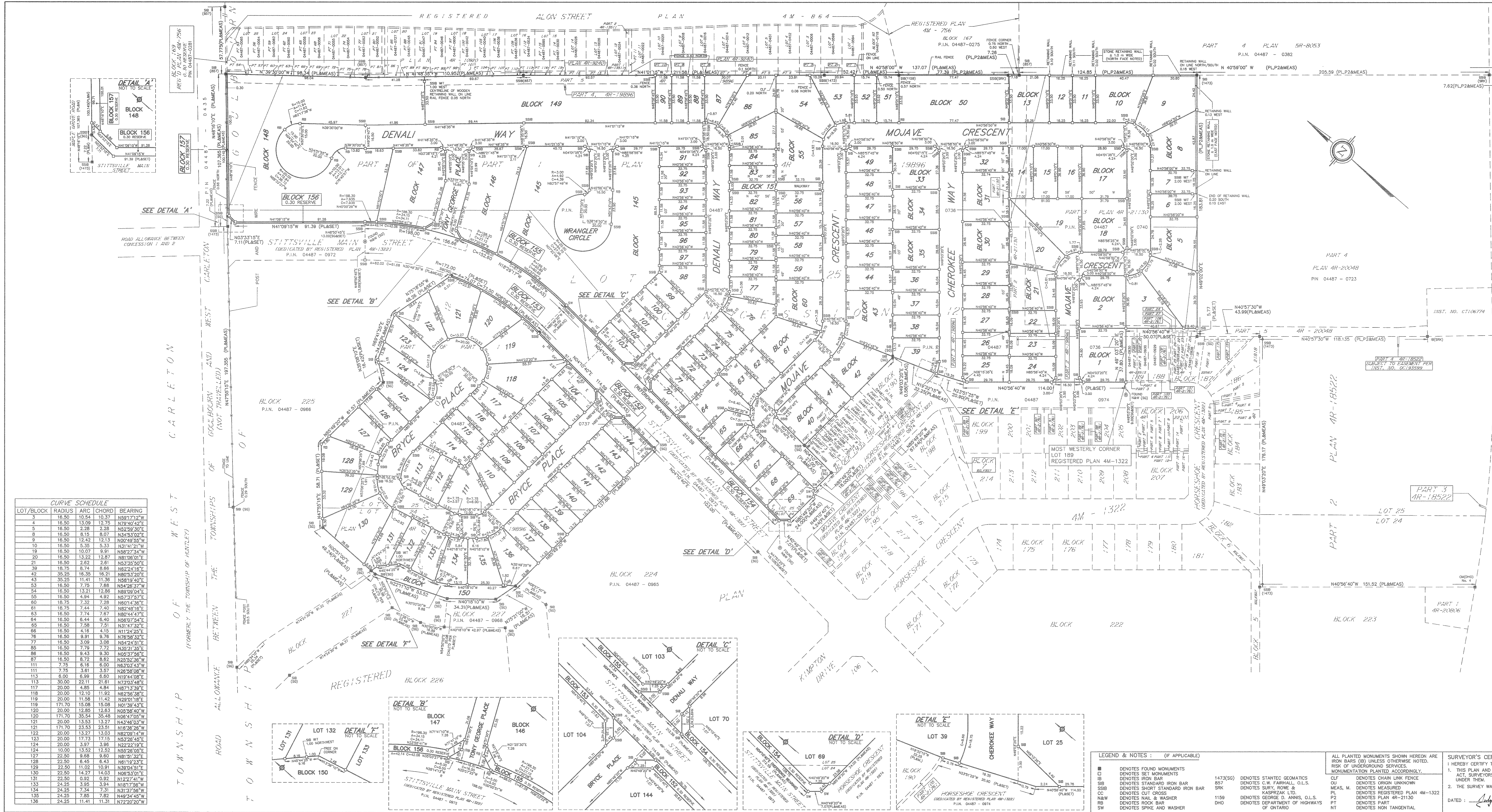
PLAN OF SUBDIVISION OF PART OF LOTS 24 AND 25 CONCESSION 12 GEOGRAPHIC TOWNSHIP OF GOULBOURN CITY OF OTTAWA STANTEC GEOMATICS LTD. 2008

SCALE 1:1000 METRES. METRIC. DISTANCES SHOWN ON THIS PLAN ARE IN METRES AND CAN BE CONVERTED TO FEET BY DIVIDING BY 0.3048.

OWNER'S CERTIFICATE: I HEREBY CERTIFY THAT: 1. BLOCKS 1 & 2 AND LOTS 3 & 4 AND BLOCK 5 AND LOTS 6 & 7 AND BLOCK 8 AND LOT 9 AND BLOCK 10 AND LOTS 11 & 12 AND BLOCK 13 AND LOTS 14, 15 & 16 AND BLOCKS 17 & 18 AND LOTS 19 & 20 AND BLOCK 21 AND LOTS 22 TO 29 BOTH INCLUSIVE AND BLOCKS 30 & 31 AND LOT 32 AND BLOCKS 33, 34 & 35 AND LOTS 36, 37, 38 & 39 AND BLOCK 40 AND LOT 41 AND BLOCKS 42 & 43 AND LOTS 44 TO 49 BOTH INCLUSIVE AND BLOCK 50 AND LOTS 51, 52, 53 & 54 AND BLOCK 55 AND LOTS 56, 57, 58 & 59 AND BLOCKS 60 & 61 AND LOTS 62 TO 144 BOTH INCLUSIVE AND BLOCKS 145 TO 150 BOTH INCLUSIVE AND THE WALKWAY BLOCK 151 AND THE 0.30 RESERVE BLOCKS 152, 153, 154, 155, 156 AND 157 AND THE STREETS NAMELY BRYCE PLACE, DENALI WAY, TONY GEORGE PLACE, WRANGLER CIRCLE, MOJAVE CRESCENT AND CHEROKEE WAY HAVE BEEN LAID OUT IN ACCORDANCE WITH OUR INSTRUCTIONS.

JACKSON TRAILS PARTNERSHIP. TARTAN JACKSON TRAILS DEVELOPMENTS INC. TAGGART RESIDENTIAL DEVELOPMENTS LTD. DATED: 11 July 2008. R. DOUGLAS LAZIER, PRESIDENT. I HAVE THE AUTHORITY TO BIND THE CORPORATION.

STANTEC GEOMATICS LTD. Ontario Land Surveyors. (613)722-4420 FAX: (613)722-0768. www.stantec.com



CURVE SCHEDULE table with columns: LOT/BLOCK, RADIUS, ARC, CHORD, BEARING. Lists data for lots/blocks 3 through 136.

LEGEND & NOTES: (IF APPLICABLE). DENOTES FOUND MONUMENTS, DENOTES SET MONUMENTS, DENOTES IRON BAR, DENOTES STANDARD IRON BAR, DENOTES SHORT STANDARD IRON BAR, DENOTES CUT CROSS, DENOTES NAIL & WASHER, DENOTES ROCK BAR, DENOTES SPIKE AND WASHER.

LEGEND & NOTES: (IF APPLICABLE). DENOTES STANTEC GEOMATICS, DENOTES C.W. FARRALL, O.L.S., DENOTES S.R. ROWE & KASPRZAK LTD., DENOTES SCORRE & ANNIS, O.L.S., DENOTES DEPARTMENT OF HIGHWAYS OF ONTARIO.

LEGEND & NOTES: (IF APPLICABLE). DENOTES UNDERGROUND SERVICES, DENOTES MONUMENTATION PLANTED ACCORDINGLY, DENOTES CHAIN LINK FENCE, DENOTES IRON UNKNOWN, DENOTES MEASURED, DENOTES REGISTERED PLAN 4M-1322, DENOTES PLAN 4R-21150, DENOTES PART, DENOTES NON TANGENTIAL.

LEGEND & NOTES: (IF APPLICABLE). ALL PLANTED MONUMENTS SHOWN HEREON ARE IRON BARS (B) UNLESS OTHERWISE NOTED. RISK OF UNDERGROUND SERVICES. MONUMENTATION PLANTED ACCORDINGLY.

LEGEND & NOTES: (IF APPLICABLE). THIS PLAN AND SURVEY ARE CORRECT AND IN ACCORDANCE WITH THE SURVEYS ACT, SURVEYORS ACT AND THE LAND TITLES ACT AND THE REGULATIONS MADE UNDER THEM.

LEGEND & NOTES: (IF APPLICABLE). THE SURVEY WAS COMPLETED ON THE 20TH DAY OF JUNE, 2008.

LEGEND & NOTES: (IF APPLICABLE). I HEREBY CERTIFY THAT: 1. THIS PLAN AND SURVEY ARE CORRECT AND IN ACCORDANCE WITH THE SURVEYS ACT, SURVEYORS ACT AND THE LAND TITLES ACT AND THE REGULATIONS MADE UNDER THEM.

LEGEND & NOTES: (IF APPLICABLE). THE SURVEY WAS COMPLETED ON THE 20TH DAY OF JUNE, 2008.

LEGEND & NOTES: (IF APPLICABLE). I HAVE THE AUTHORITY TO BIND THE CORPORATION.

LEGEND & NOTES: (IF APPLICABLE). I HAVE THE AUTHORITY TO BIND THE CORPORATION.

LEGEND & NOTES: (IF APPLICABLE). FROM THE OFFICE OF: D.L. SIMMONDS, ONTARIO LAND SURVEYOR.

LEGEND & NOTES: (IF APPLICABLE). FROM THE OFFICE OF: P.M. FP, DRAM: CEC, CHECKED: EM, FIELD: SPH/BL, JOB NO.: 18161366-132.

LEGEND & NOTES: (IF APPLICABLE). DRAWING: 16161074-132-JacksonTrails-Ph2-rev1.dwg

LEGEND & NOTES: (IF APPLICABLE). DATE: July 15/08

LEGEND & NOTES: (IF APPLICABLE). DATE: July 15/08

LEGEND & NOTES: (IF APPLICABLE). DATE: July 15/08

LEGEND & NOTES: (IF APPLICABLE). DATE: July 15/08

LEGEND & NOTES: (IF APPLICABLE). DATE: July 15/08

LEGEND & NOTES: (IF APPLICABLE). DATE: July 15/08

LEGEND & NOTES: (IF APPLICABLE). DATE: July 15/08

LEGEND & NOTES: (IF APPLICABLE). DATE: July 15/08

LEGEND & NOTES: (IF APPLICABLE). DATE: July 15/08

LEGEND & NOTES: (IF APPLICABLE). DATE: July 15/08

LEGEND & NOTES: (IF APPLICABLE). DATE: July 15/08

LEGEND & NOTES: (IF APPLICABLE). DATE: July 15/08

LEGEND & NOTES: (IF APPLICABLE). DATE: July 15/08

LEGEND & NOTES: (IF APPLICABLE). DATE: July 15/08

LEGEND & NOTES: (IF APPLICABLE). DATE: July 15/08

LEGEND & NOTES: (IF APPLICABLE). DATE: July 15/08

LEGEND & NOTES: (IF APPLICABLE). DATE: July 15/08

LEGEND & NOTES: (IF APPLICABLE). DATE: July 15/08

LEGEND & NOTES: (IF APPLICABLE). DATE: July 15/08

LEGEND & NOTES: (IF APPLICABLE). DATE: July 15/08

LEGEND & NOTES: (IF APPLICABLE). DATE: July 15/08

LEGEND & NOTES: (IF APPLICABLE). DATE: July 15/08

LEGEND & NOTES: (IF APPLICABLE). DATE: July 15/08

LEGEND & NOTES: (IF APPLICABLE). DATE: July 15/08

LEGEND & NOTES: (IF APPLICABLE). DATE: July 15/08

LEGEND & NOTES: (IF APPLICABLE). DATE: July 15/08

LEGEND & NOTES: (IF APPLICABLE). DATE: July 15/08

LEGEND & NOTES: (IF APPLICABLE). DATE: July 15/08

LEGEND & NOTES: (IF APPLICABLE). DATE: July 15/08

LEGEND & NOTES: (IF APPLICABLE). DATE: July 15/08

LEGEND & NOTES: (IF APPLICABLE). DATE: July 15/08

LEGEND & NOTES: (IF APPLICABLE). DATE: July 15/08