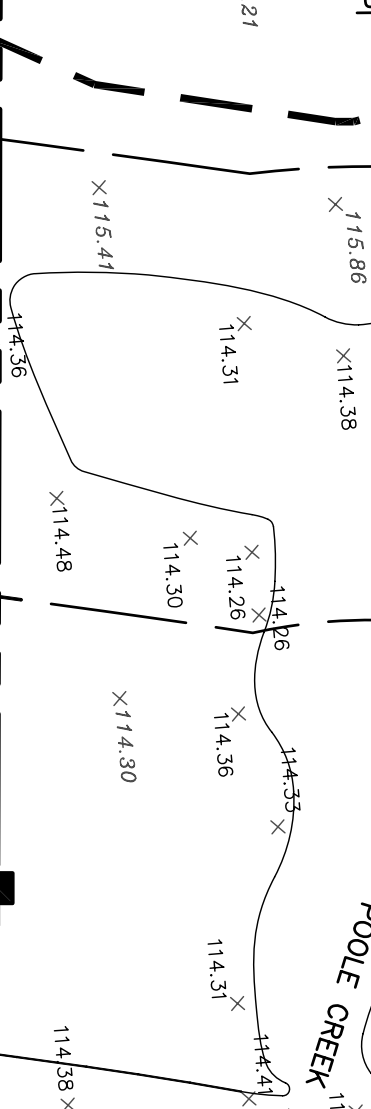
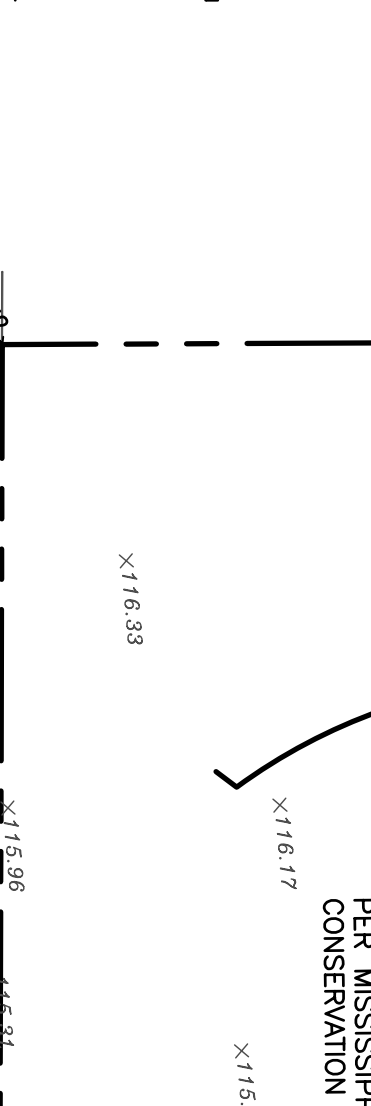
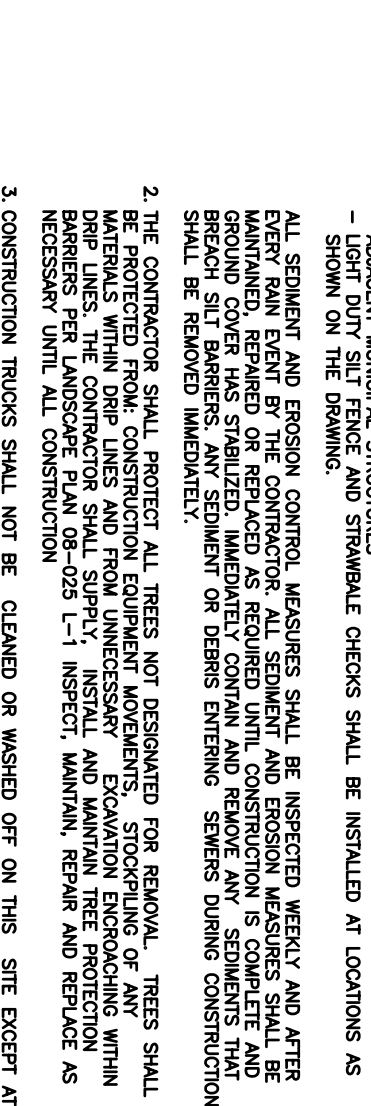
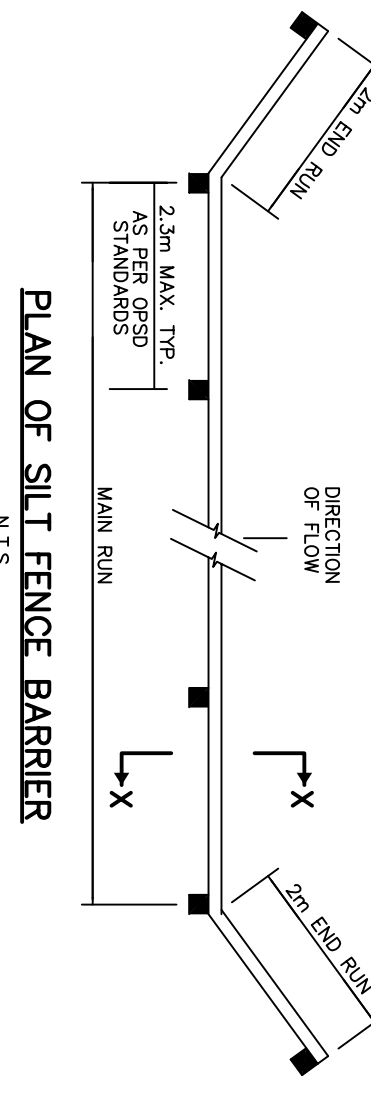


NOTES - GENERAL

- CONTRACTOR IS RESPONSIBLE FOR ALL LAYOUT FOR CONSTRUCTION PURPOSES.
- ALL ELEVATIONS ARE GEODETIC AND UTILIZE METRIC UNITS.
- JOB BENCH MARK - CONFORM WITH DAVID McMAHANS ENGINEERING
- ALL GROUND SURFACES SHALL BE EVENLY GRADED WITHOUT PRIOR TO UTILIZATION.
- ALL GROUND SURFACES SHALL BE EVENLY GRADED WITHOUT APPROVED SMALL OR CATCHBASIN OUTLETS ARE PROVIDED.
- STRIP AND REMOVE ALL TOPSOIL FROM IMPROVED AREAS.
- CONTRACTORS AND SCHEDULE ALL WORK WITH OTHER TRADES AND CONTRACTORS.
- ALL EDGES OF DISTURBED PAVEMENT SHALL BE SAW CUT TO FORM A NEAT AND STRAIGHT LINE PRIOR TO PAVING NEW PAVEMENT.
- CONTRACTOR IS TO COMPLY WITH THE CITY OF OTTAWA CITY STANDARDS.
- CONTRACTOR IS TO COMPLY WITH THE CITY OF OTTAWA CITY STANDARDS FOR ROAD CONTROL WHEN WORKING ON CITY STREETS.
- RESTORE PAVEMENT STRUCTURE AND SURFACES ON EXISTING ROADS TO A CONDITION AT LEAST EQUAL TO ORIGINAL AND TO THE SATISFACTION OF THE MAIN AND ADJOINING PROPERTY OWNERS.
- RESTORE PAVEMENT STRUCTURE AND SURFACES ON EXISTING ROADS TO A CONDITION AT LEAST EQUAL TO ORIGINAL AND TO THE SATISFACTION OF THE MAIN AND ADJOINING PROPERTY OWNERS UNLESS OTHERWISE NOTED. (CONSTRUCTION SPSS 208.310 & 314 MATERIALS SPSS 1001, 1003 & 1010).
- RESTORE PAVEMENT STRUCTURE AND SURFACES ON EXISTING ROADS TO A CONDITION AT LEAST EQUAL TO ORIGINAL AND TO THE SATISFACTION OF THE MAIN AND ADJOINING PROPERTY OWNERS UNLESS OTHERWISE NOTED. (CONSTRUCTION SPSS 208.310 & 314 MATERIALS SPSS 1001, 1003 & 1010).
- SURPLY AND INSTALL ALL PIPING AND APPURTENANCES AS SHOWN TO WITHIN 1.0m OF BUILDING WALLS PROVIDE TEMPORARY CHAINS, PROTECT UNDERPASS STRUCTURES, CALL FOR STEEL AND OTHER LAOSCAPE FEATURE MATERIALS AND LOCATIONS.
- ALL CURB TO BE 150mm ABOVE FINISHED ASPHALT GRADE UNLESS OTHERWISE NOTED.
- DESIGN ELEVATIONS, AS GIVEN ON THIS PLAN ARE TO BE AGREED TO BY THE CONTRACTOR AND APPROVED BY THE ENGINEER.
- V/C CONTRACTOR TO INSTALL AND MAINTAIN A FILTER CLOTH CATCH BAGS ALL MUD/CLAY TO PREVENT SEDIMENTS AND COMPLETE ANY SEDIMENTS/GRANULARS ENTERING STRUCTURES AND SEWERS SHALL BE IMMEDIATELY REMOVED.
- V/C CONTRACTOR TO CONTROL LOCATION(S) AND ELEVATION(S) OF ALL CONSTRUCTION AND EXISTING SERVICES THAT MAY CAUSE CONFLICTS PRIOR TO ANY NEW SERVICE, WATER AND/OR STORM TO BE INSTALLED. ANY CONFLICTS SHALL BE IMMEDIATELY REPORTED TO THE ENGINEER.
- CONTRACTOR SHALL ARRANGE BARRIER SET-UP OF ALL SURFACE CARRY OUT THEIR OWN TEST THIS AS REQUIRED TO MAKE THEM THEM UNDERSTANDING ASSESSMENT OF GROUND CONDITIONS. COST DUE TO ANY SUCH GROUND CONDITIONS VARYING FROM THOSE ANTICIPATED BY THE CONTRACTOR.
- CONTRACTOR SHALL COORDINATE AND PAY FOR ALL CONSTRUCTION BY THE CITY OF OTTAWA.
- CONTRACTOR SHALL COORDINATE AND APPROVED BY PATERSON GROUP GEOTECHNICAL REPORT (PRO333-3) PREPARED BY PATERSON GROUP DATED FEBRUARY 25, 1010.

NOTE:
THE POSITION OF ALL POLE LINES, CONDUITS, WATERMANS, SEWERS AND OTHER UNDERGROUND AND OVERGROUND UTILITIES ARE SHOWN AS APPROXIMATE. THE CONTRACTOR SHALL VERIFY THE ACCURACY OF THE POSITION OF SUCH UTILITIES AND DETERMINE THE EXACT LOCATION OF ALL SUCH UTILITIES AND STRUCTURES AND ASSUME ALL LIABILITY FOR DAMAGE TO THEM.



NOTES - SEDIMENT, EROSION & TREE PROTECTION

- IN ACCORDANCE WITH BEST MANAGEMENT PRACTICES FOR EROSION & SEDIMENT CONTROL - ADVISORY INDUSTRIAL STRUCTURES - ADVISORY INDUSTRIAL STRUCTURES SHALL BE INSTALLED IN ACCORDANCE AS SHOWN ON THE DRAWING.
- ALL SEDIMENT AND EROSION CONTROL MEASURES SHALL BE INSPECTED WEEKLY AND AFTER EVERY RAIN EVENT BY THE CONTRACTOR. ALL SEDIMENT AND EROSION MEASURES SHALL BE MAINTAINED AND REPAIRED IMMEDIATELY TO PREVENT SEDIMENT AND EROSION FROM OCCURRING. IMMEDIATELY CONTAIN AND REMOVE ANY SEDIMENTS THAT ARE OBSERVED ON THE SITE. SEDIMENT AND EROSION CONTROL MEASURES SHALL BE REMOVED IMMEDIATELY.
- THE CONTRACTOR SHALL PROTECT ALL TREES NOT ASSIGNED FOR REMOVAL. TREES SHALL BE PROTECTED BY THE CONTRACTOR. THE CONTRACTOR SHALL MAINTAIN AND REPAIR ALL PROTECTION MEASURES THROUGHOUT THE CONSTRUCTION PERIOD. THE CONTRACTOR SHALL MAINTAIN AND REPAIR ALL PROTECTION MEASURES THROUGHOUT THE CONSTRUCTION PERIOD. THE CONTRACTOR SHALL MAINTAIN AND REPAIR ALL PROTECTION MEASURES THROUGHOUT THE CONSTRUCTION PERIOD.
- CONSTRUCTION TRACES SHALL NOT BE CLEANED OR WASHED OFF ON THIS SITE EXCEPT AT THE END OF THE DAY. THE CONTRACTOR SHALL MAINTAIN AND REPAIR ALL PROTECTION MEASURES THROUGHOUT THE CONSTRUCTION PERIOD.

NO.	DESCRIPTION	DATE	BY
1.	ISSUED FOR SITE PLAN APPLICATION	NOV 10/10	CJR
2.	ISSUED FOR CONDOMINIUM	OCT 26/10	CJR
3.	REVISED PER LANDSCAPE PLAN	MAY 13/10	KJM
4.	ISSUED FOR CLIENT REVIEW	MAY 7/10	KJM

DESIGN	DATE	BY
DESIGNED	NOV 10/10	CJR
CHECKED	OCT 26/10	CJR
APPROVED	MAY 13/10	KJM

DESIGN	DATE	BY
DESIGNED	NOV 10/10	CJR
CHECKED	OCT 26/10	CJR
APPROVED	MAY 13/10	KJM

DESIGN	DATE	BY
DESIGNED	NOV 10/10	CJR
CHECKED	OCT 26/10	CJR
APPROVED	MAY 13/10	KJM

DESIGN	DATE	BY
DESIGNED	NOV 10/10	CJR
CHECKED	OCT 26/10	CJR
APPROVED	MAY 13/10	KJM

DESIGN	DATE	BY
DESIGNED	NOV 10/10	CJR
CHECKED	OCT 26/10	CJR
APPROVED	MAY 13/10	KJM

DESIGN	DATE	BY
DESIGNED	NOV 10/10	CJR
CHECKED	OCT 26/10	CJR
APPROVED	MAY 13/10	KJM

DESIGN	DATE	BY
DESIGNED	NOV 10/10	CJR
CHECKED	OCT 26/10	CJR
APPROVED	MAY 13/10	KJM

DESIGN	DATE	BY
DESIGNED	NOV 10/10	CJR
CHECKED	OCT 26/10	CJR
APPROVED	MAY 13/10	KJM

DESIGN	DATE	BY
DESIGNED	NOV 10/10	CJR
CHECKED	OCT 26/10	CJR
APPROVED	MAY 13/10	KJM

DESIGN	DATE	BY
DESIGNED	NOV 10/10	CJR
CHECKED	OCT 26/10	CJR
APPROVED	MAY 13/10	KJM

DESIGN	DATE	BY
DESIGNED	NOV 10/10	CJR
CHECKED	OCT 26/10	CJR
APPROVED	MAY 13/10	KJM

DESIGN	DATE	BY
DESIGNED	NOV 10/10	CJR
CHECKED	OCT 26/10	CJR
APPROVED	MAY 13/10	KJM

DESIGN	DATE	BY
DESIGNED	NOV 10/10	CJR
CHECKED	OCT 26/10	CJR
APPROVED	MAY 13/10	KJM

DESIGN	DATE	BY
DESIGNED	NOV 10/10	CJR
CHECKED	OCT 26/10	CJR
APPROVED	MAY 13/10	KJM

DESIGN	DATE	BY
DESIGNED	NOV 10/10	CJR
CHECKED	OCT 26/10	CJR
APPROVED	MAY 13/10	KJM

DESIGN	DATE	BY
DESIGNED	NOV 10/10	CJR
CHECKED	OCT 26/10	CJR
APPROVED	MAY 13/10	KJM

DESIGN	DATE	BY
DESIGNED	NOV 10/10	CJR
CHECKED	OCT 26/10	CJR
APPROVED	MAY 13/10	KJM

DESIGN	DATE	BY
DESIGNED	NOV 10/10	CJR
CHECKED	OCT 26/10	CJR
APPROVED	MAY 13/10	KJM

DESIGN	DATE	BY
DESIGNED	NOV 10/10	CJR
CHECKED	OCT 26/10	CJR
APPROVED	MAY 13/10	KJM

DESIGN	DATE	BY
DESIGNED	NOV 10/10	CJR
CHECKED	OCT 26/10	CJR
APPROVED	MAY 13/10	KJM

DESIGN	DATE	BY
DESIGNED	NOV 10/10	CJR
CHECKED	OCT 26/10	CJR
APPROVED	MAY 13/10	KJM

DESIGN	DATE	BY
DESIGNED	NOV 10/10	CJR
CHECKED	OCT 26/10	CJR
APPROVED	MAY 13/10	KJM

DESIGN	DATE	BY
DESIGNED	NOV 10/10	CJR
CHECKED	OCT 26/10	CJR
APPROVED	MAY 13/10	KJM

DESIGN	DATE	BY
DESIGNED	NOV 10/10	CJR
CHECKED	OCT 26/10	CJR
APPROVED	MAY 13/10	KJM

DESIGN	DATE	BY
DESIGNED	NOV 10/10	CJR
CHECKED	OCT 26/10	CJR
APPROVED	MAY 13/10	KJM

DESIGN	DATE	BY
DESIGNED	NOV 10/10	CJR
CHECKED	OCT 26/10	CJR
APPROVED	MAY 13/10	KJM

DESIGN	DATE	BY
DESIGNED	NOV 10/10	CJR
CHECKED	OCT 26/10	CJR
APPROVED	MAY 13/10	KJM

DESIGN	DATE	BY
DESIGNED	NOV 10/10	CJR
CHECKED	OCT 26/10	CJR
APPROVED	MAY 13/10	KJM

DESIGN	DATE	BY
DESIGNED	NOV 10/10	CJR
CHECKED	OCT 26/10	CJR
APPROVED	MAY 13/10	KJM

DESIGN	DATE	BY
DESIGNED	NOV 10/10	CJR
CHECKED	OCT 26/10	CJR
APPROVED	MAY 13/10	KJM

DESIGN	DATE	BY
DESIGNED	NOV 10/10	CJR
CHECKED	OCT 26/10	CJR
APPROVED	MAY 13/10	KJM

DESIGN	DATE	BY
DESIGNED	NOV 10/10	CJR
CHECKED	OCT 26/10	CJR
APPROVED	MAY 13/10	KJM

DESIGN	DATE	BY
DESIGNED	NOV 10/10	CJR
CHECKED	OCT 26/10	CJR
APPROVED	MAY 13/10	KJM

DESIGN	DATE	BY
DESIGNED	NOV 10/10	CJR
CHECKED	OCT 26/10	CJR
APPROVED	MAY 13/10	KJM

DESIGN	DATE	BY
DESIGNED	NOV 10/10	CJR
CHECKED	OCT 26/10	CJR
APPROVED	MAY 13/10	KJM

DESIGN	DATE	BY
DESIGNED	NOV 10/10	CJR
CHECKED	OCT 26/10	CJR
APPROVED	MAY 13/10	KJM

DESIGN	DATE	BY
DESIGNED	NOV 10/10	CJR
CHECKED	OCT 26/10	CJR
APPROVED	MAY 13/10	KJM

DESIGN	DATE	BY
DESIGNED	NOV 10/10	CJR
CHECKED	OCT 26/10	CJR
APPROVED	MAY 13/10	KJM

DESIGN	DATE	BY
DESIGNED	NOV 10/10	CJR
CHECKED	OCT 26/10	CJR
APPROVED	MAY 13/10	KJM

DESIGN	DATE	BY
DESIGNED	NOV 10/10	CJR
CHECKED	OCT 26/10	CJR
APPROVED	MAY 13/10	KJM

DESIGN	DATE	BY
DESIGNED	NOV 10/10	CJR
CHECKED	OCT 26/10	CJR
APPROVED	MAY 13/10	KJM

DESIGN	DATE	BY
DESIGNED	NOV 10/10	CJR
CHECKED	OCT 26/10	CJR
APPROVED	MAY 13/10	KJM

DESIGN	DATE	BY
DESIGNED	NOV 10/10	CJR
CHECKED	OCT 26/10	CJR
APPROVED	MAY 13/10	KJM

DESIGN	DATE	BY
DESIGNED	NOV 10/10	CJR
CHECKED	OCT 26/10	CJR
APPROVED	MAY 13/10	KJM

DESIGN	DATE	BY
DESIGNED	NOV 10/10	CJR
CHECKED	OCT 26/10	CJR
APPROVED	MAY 13/10	KJM

DESIGN	DATE	BY
DESIGNED	NOV 10/10	CJR
CHECKED	OCT 26/10	CJR
APPROVED	MAY 13/10	KJM

DESIGN	DATE	BY
DESIGNED	NOV 10/10	CJR
CHECKED	OCT 26/10	CJR
APPROVED	MAY 13/10	KJM

DESIGN	DATE	BY
DESIGNED	NOV 10/10	CJR
CHECKED	OCT 26/10	CJR
APPROVED	MAY 13/10	KJM

DESIGN	DATE	BY
DESIGNED	NOV 10/10	CJR
CHECKED	OCT 26/10	CJR
APPROVED	MAY 13/10	KJM

DESIGN	DATE	BY
DESIGNED	NOV 10/10	CJR
CHECKED	OCT 26/10	CJR
APPROVED	MAY 13/10	KJM

DESIGN	DATE	BY
DESIGNED	NOV 10/10	CJR
CHECKED	OCT 26/10	CJR
APPROVED	MAY 13/10	KJM

DESIGN	DATE	BY
DESIGNED	NOV 10/10	